



LPEA Division Dashboards

November 2021

Key Performance Indicators

Attribute	Metric	YTD Goal	YTD Actual	Status
Safety	Average Safety Meeting Attendance (%)	>= 80.00	83.77	✓
Reliability	System Average Interruption Duration Index (SAIDI; min/yr)	< 66.917	48.963	✓
	System Average Interruption Frequency Index (SAIFI, outages/member-yr)	< 0.889	0.598	✓
	Average System Availability Index (ASAI, %)	> 99.986	99.990	✓
Finance <i>NOTE: Finance numbers from Oct 2021.</i>	Financial Health Score	>= 100.00	226.38	✓
	YTD Operating Margin (% of Revenue)	>= 1	4.29	✓
	Cash Reserves (% of Operating Costs)	16 - 20	14.48	!
	Debt Financing (% of Equity)	<= 100	74.49	✓
	Modified Debt Service Coverage (MDSC)	>= 1.35	2.37	✓
	Operating Times Interest Earned Ratio (OTIER)	>= 1.50	2.75	✓
	Equity (%)	45 - 50	52.66	!
Beneficial Electrification	EV Sales (kWh)	>= 653627	740232	✓
Information Technology	Average Critical System Uptime (%)	>= 99.9	99.936	✓



Meeting or exceeding performance goal



Monitoring performance



Not on track to meet performance goal

Date Range: 01/01/2021 - 11/30/2021

Definitions of attributes can be found at the end of this report.

A photograph of a row of red fire extinguishers in a warehouse. The extinguishers are arranged in a line, with some in the foreground and others receding into the background. They are mounted on a metal rack. The background shows a warehouse interior with various equipment and structures. A semi-transparent white box with the text "NOVEMBER HIGHLIGHTS" and a yellow lightning bolt icon is overlaid on the image.

NOVEMBER HIGHLIGHTS



INSTRUCTIONS / INSTRUCCIONES

1. PULL PIN. HOLD UP-RIGHT.
TIRE DE LA CLAVIJA.
SOSTENGALA VERTICALMENTE.
2. START BACK 10 FEET (3 m). AIM AT
BASE OF FIRE.
COMIENCE DESDE ATRAS
A 10 PIES (3 m). APUNTE
A LA BASE DEL FUEGO.
3. DEPRESS PUSH LEVER.
SWEEP SIDE TO SIDE.
PRESIONE HACIA ABAJO LA
PALANCA, DISTRIBUYA DE LADO A LADO.

ANSUL Sentry



STEM Curriculum Development

Participated in inaugural industry and community leader think-tank session to help 9-R build STEM curriculum to prepare students for careers in those fields. Future work will include presentations to local High Schools about STEM careers.



Community education

Provided an update on LPEA's 3-pronged power supply explorations to the Economic Alliance's November investor meeting.



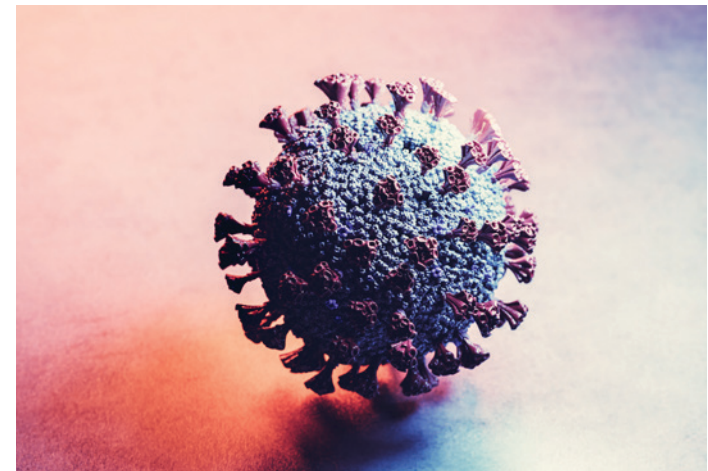
Accidents and Incidents

0



COVID-19 Cases

3





Staking Software Training

Hosted GeoDigital for a day of training for our stakers. They learned about the latest features/enhancements added to the staking software and reviewed existing tools that are helpful for designing larger capital projects. The staking team also discussed procedures to ensure alignment.



Hillcrest Completed

Completed the Hillcrest emergency cable replacement of 1,200 feet of bad 3-phase underground primary line. The outdated cable caused multiple, extended outages across an entire substation circuit. This fix will greatly improve service reliability in the area.



Veteran's Day "Bert" Challenge

Employees participating in the "Bert" challenge, a mental and physical challenge designed to honor all who have fought for and served our country.



Completed Pagosa Projects

Pagosa crews completed the Lost Valley of the San Juans capital project, which replaced 7,400 feet of outdated, underground line. This upgrade will help prevent future outages in that area. That concludes Pagosa's capital projects for 2021.



Legal Proceedings

Attended several FERC proceedings on the BDP/CTP case and on the new CTP case at FERC.



“Fill the Bucket” Food Drive

Supported the 14th Annual “Fill the Bucket” food drive in Durango and Pagosa Springs. LPEA staff, LPEA board, and the community donated 6,022 pounds of food and \$1,400 in cash donations.



Transmission Opportunities

Launched a study to determine how LPEA can leverage its existing transmission assets and what new elements should be considered if this area becomes part of an RTO (Regional Transmission Organization).



Power Supply Webpage

Redesigned [LPEA's Power Supply webpage](#) to provide members with a better understanding of the latest updates and resources on the process.



Giving Tree Launch

Launched [LPEA's annual Giving Tree program](#), which allows members to help other members keep their lights on during the holiday season. This year, we are using Venmo (@GivingTree_LPEA) as a new payment option. In the first week, we collected more than \$4,000 in donations.



Capital Credits Deep Dive

Finance staff researched the history of Capital Credit allocations and retirements from LPEA to members and from Tri-State to LPEA since 2000. This will be presented to the board in December.

Broadband Best Practices

Attended a broadband summit where cooperatives shared experiences on what has and has not worked for them in the field of broadband. Gained insights for the pole attachment survey that LPEA will conduct in 2022.

Budget Approval

Completed 2022 Budget Book and presented to the board. Budgeted financial statements and capital plans were approved.

Animas View Pilot

LPEA staff met with NRECA, Tri-State, 4CORE, and the Beneficial Electrification League to draft a strategy to effectively communicate milestones and outcomes of [LPEA's Animas View Pilot Project](#).

